



Yamaha T-MAX 500 (2001 - 2005)

Supersport SP Series Exhaust System



Akrapovic Supersport SP series Exhaust System

for the Yamaha T-MAX 500 (2001 - 2005)

Description

The Akrapovic SUPERSPORT SP series complete system is designed for maxi scooter riders looking for a comfortable ride and a bit of the kind of tuning usually reserved for sport motorcycles. With an Akrapovic exhaust system the Yamaha T-max will gain in both looks and performance. The system has a homologated noise dampers installed for the EU market, and is available without the dampers for the US market.

PERFORMANCE

Measurements of the Akrapovic SUPERSPORT SP SERIES system on the YAMAHA T-MAX (without noise damper):

Power & Torque: with the Akrapovic Supersport system the engine gains significant increases in power and torque. The T-max engine will now have more throttle response throughout the range, which is exceptionally welcome given the intention of the scooter. At 6550 rpm it puts out 36.4 HP.

CONFIGURATION

The system is composed of cylindrical stainless steel header tubes joined by a conical stainless steel Y link pipe. The link pipe also serves as the collector. The joints are sleeve joints held together with silicon-shielded tensioning springs, including the link pipe Ø muffler joint. As the system is part of the SP series, the inlet and outlet cap and inner perforation are made of stainless steel, while the outer sleeve is made entirely of titanium. For the European market the mufflers have an approved noise damper, while for the US market the mufflers do not have the noise dampers.

	PERFORMANCE		
	stock	AKRAPOVIC	max. increased power
max. rear wheel power HP / rpm (measured on Dynojet ATV)	34.6 / 6500	36.4 / 6550	2.9 / 7700

	CONFIGURATION		
	header tubes	collector	link pipe
material	STAINLESS STEEL	-	STAINLESS STEEL
tube shape	CYLINDRICAL	-	CONICAL

interference crossover tubes	-	lambda sensor	YES
header tube inner sleeves	S.S. CNC MACHINED	header tube flanges	S.S. LASER CUT
header tubes - collector connection	SLEEVE JOINT + SILICON SHILDED SPRING	collector / header tube - link pipe connection	-
link pipe - muffler connection	SLEEVE JOINT + SILICON SHILDED SPRING	muffler inlet cap / outlet cap	STAINLESS STEEL / STAINLESS STEEL
muffler metal interior	STAINLESS STEEL	muffler outer sleeve	TITANIUM
muffler clamp	CARBON-FIBER ROAD	muffler bracket	-
muffler insert	EU	NOISE DAMPER (homologated)	-
	US	-	catalytic converter

	ADDITIONAL DATA		
weight comparison (kg)	stock	AKRAPOVIC	difference
	6.25	SUPERSPORT SP SERIES	stock - SUPERSPORT SP SERIES
		5.60	0.65
noise measurements (dB / rpm)	stock		AKRAPOVIC
	92.7 / 3500		99 / 3500 (open) 91.2 / 3500 (noise damper)
possibility of periodic service without removing A.E.S.	oil		oil filter
	YES		YES
legal for street use	YES		

Technical specifications of Akrapovic exhaust systems and related products subject to change without notice.

Product code: 104210 (SS-Y5S1-DT) open
104209 (SS-Y5S1-HDT) homologated

Akrapovic Supersport SP series Exhaust System

for the Yamaha T-MAX 500 (2001 - 2005)



CARBON-FIBER
MUFFLER CLAMP

Product code: 104210 (SS-Y5S1-DT) open
104209 (SS-Y5S1-HDT) homologated

Akrapovic Supersport SP series Exhaust System

for the Yamaha T-MAX 500 (2001 - 2005)

Akrapovic Exhaust System Technology copyright 2005, all rights reserved



Road
Program

Product code: 104210 (SS-Y5S1-DT) open
104209 (SS-Y5S1-HDT) homologated

Akrapovic Supersport SP series Exhaust System

for the Yamaha T-MAX 500 (2001 - 2005)



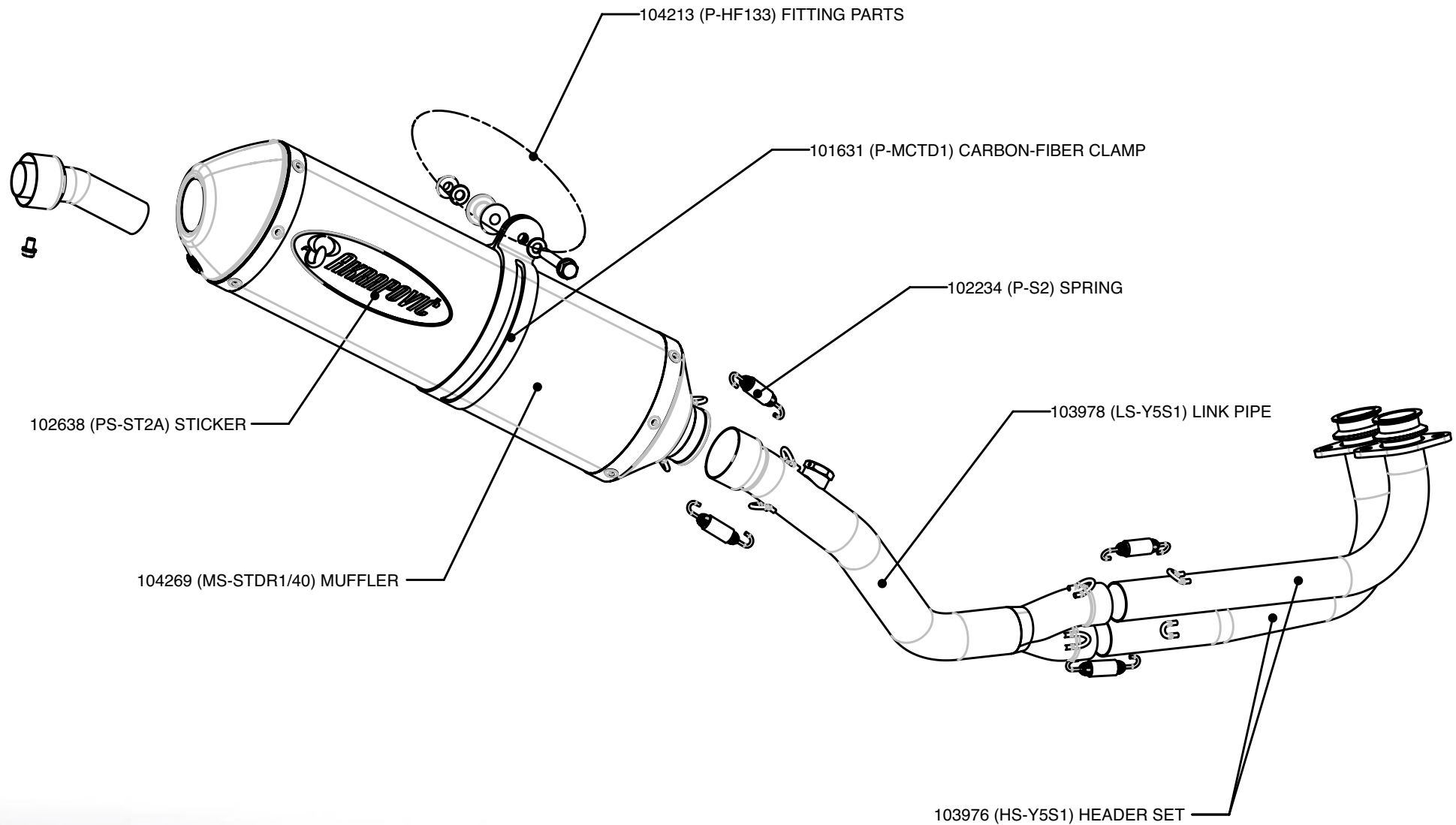
Akrapovic Exhaust System Technology copyright 2005, all rights reserved

Road
Program

Product code: 104210 (SS-Y5S1-DT) open
104209 (SS-Y5S1-HDT) homologated

Akrapovic Supersport SP series Exhaust System

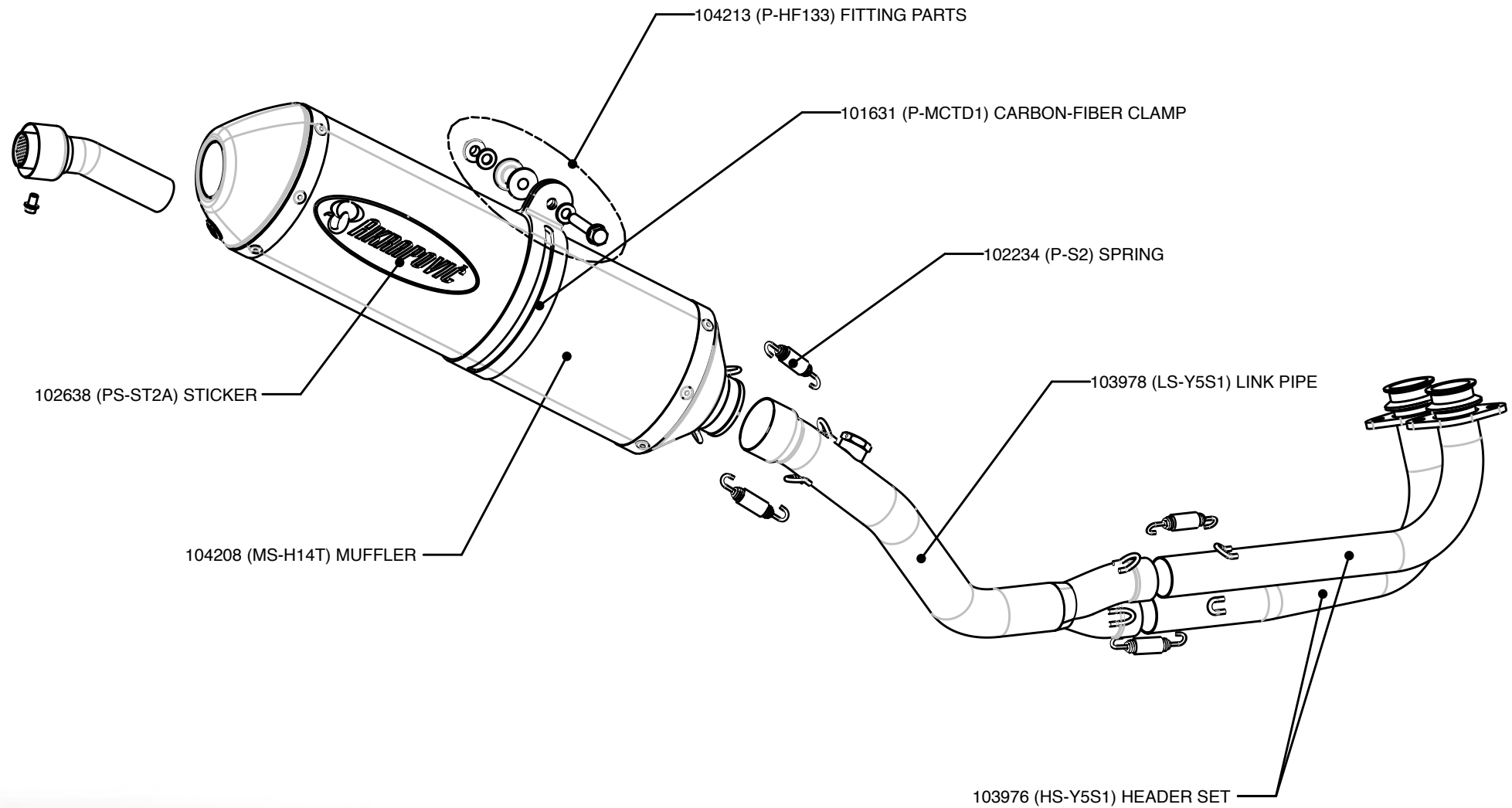
for the Yamaha T-MAX 500 (2001 - 2005)



Product code: 104210 (SS-Y5S1-DT) open

Akrapovic Supersport SP series Exhaust System

for the Yamaha T-MAX 500 (2001 - 2005)



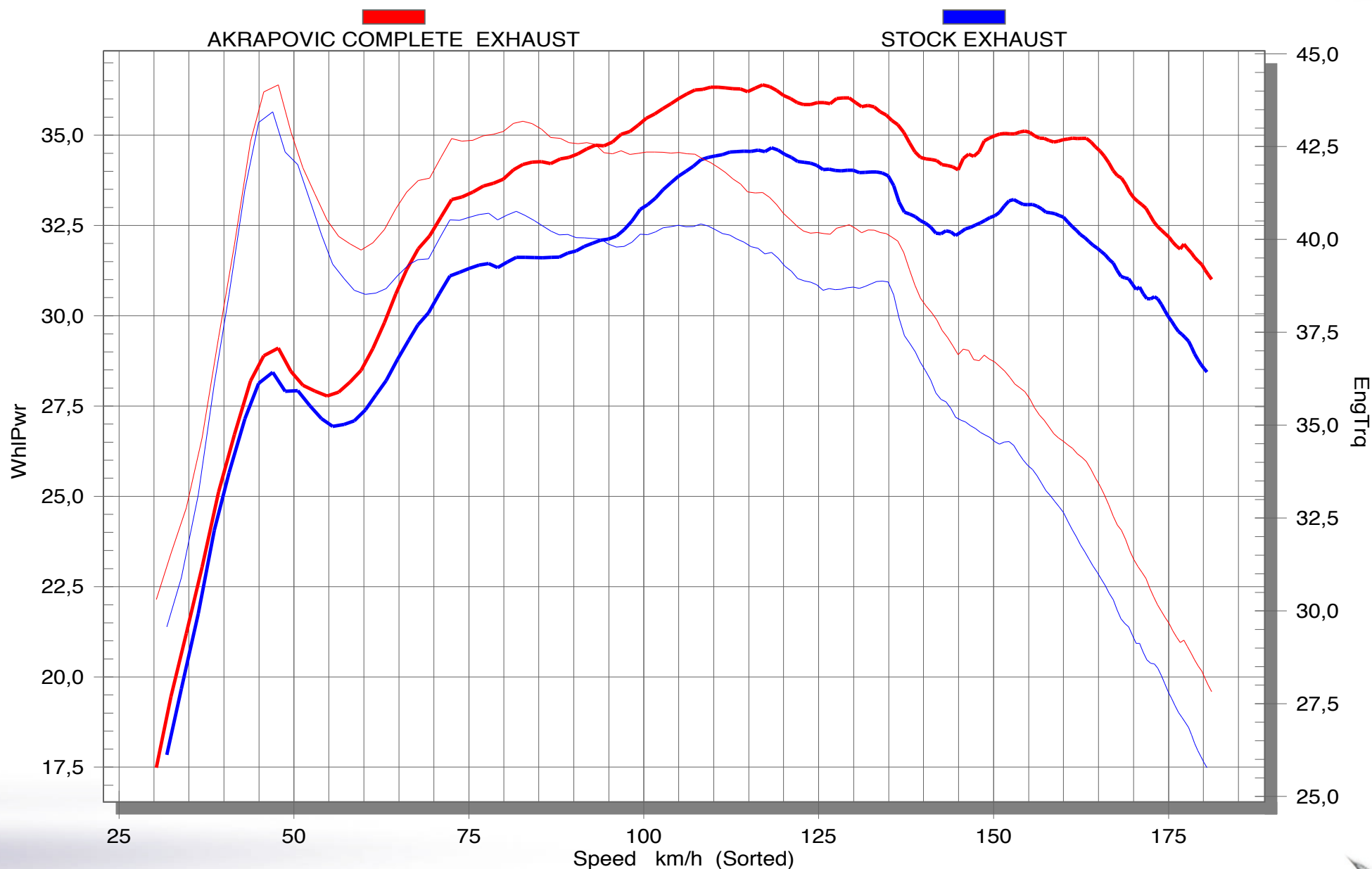
Product code: 104209 (SS-Y5S1-HDT) homologated



Akrapovic Supersport SP series Exhaust System

for the Yamaha T-MAX 500 (2001 - 2005)

Diagram / Chart



Akrapovic Exhaust System Technology copyright 2005, all rights reserved

Product code: 104210 (SS-Y5S1-DT) open
104209 (SS-Y5S1-HDT) homologated